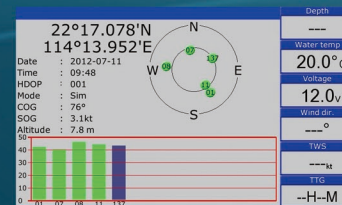
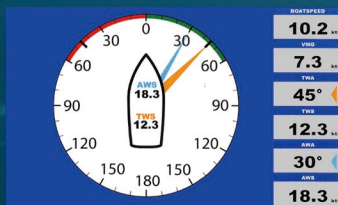
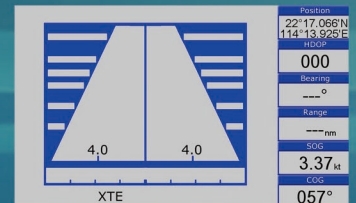
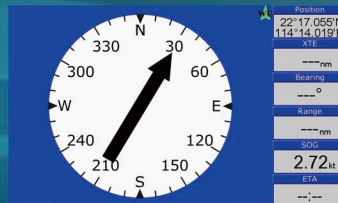
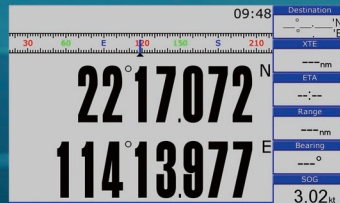
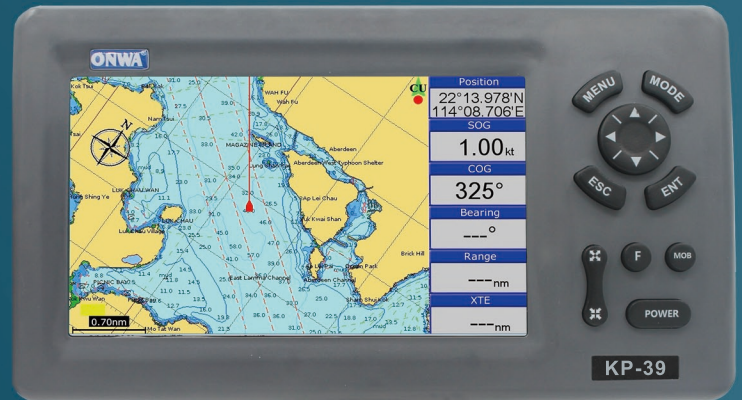


# ONWA®

## Marine Electronics

### 7-inch GPS Chart Plotter

### Model: KP-39



- Easy to Operate
- 7-inch high resolution (800x480 pixels) LCD
- Supports Dual Mapping System: K-Chart and C-Map
- Supports Onwa latest KChart3.0
- Ingress Protected to IPX5

## PLOTTER CHARACTERISTICS

Waypoints/icons	12000 user waypoints with name, symbol 3 system waypoints: MOB, Start , Cursor 10 proximity waypoints
Routes	Max 30 routes. And up to 170 points for each one
Tracks	8000 points automatic track log; 10 saved tracks (up to 8000 track points each) Let you retrace your path in both directions
Alarms	XTE, Anchor drag, arrival, speed, voltage, proximity waypoint and time, AIS alarm
Palette	Normal Daylight exposed to sunlight Night in dark environment NOAA paperchart colors
Tides	Tide data
Projection	Mercator projection
Position format	Degree of minutes and UTM
Basemap	Built-in ONWA K-Chart
External Map	SD Cards slot for C-Map MAX and ONWA K-Chart
User data storage	Internal backup of user settings
Plot Interval	5s to 60min 0.01nm to 10nm Automatic way
Plotting scales	0.001nm to 700nm
Nav Data	Inputs: \$--GGA, \$--GLL,\$--GSA, \$--GSV, \$--RMC, \$--VTG, \$--ZDA, \$--VWR, \$--VWT,\$--MWD, \$--VPW Outputs: GGA , GLL , RMC , AAM , APA , APB , BOD , BWC , BWR , DBT , DPT , HDT , MTW , RMB , TLL , VTG , WPL , XTE , ZDA , ZTG , ZDL , MWD , VPW , VWR , VWT Outputs for autopilot: \$--APB,\$--BOD,\$--XTE,\$--APA
Perspective View	On/off
Celestial	Sunrise/Sunset Moonrise/Moonset

**POWER SUPPLY** 10.5 to 35VDC, current drain<1.0A at 12V

## PHYSICAL

Size	187mm(H)X250.1mm(W)X148mm(D)
Weight	0.8kg
Display	7-inches ColorTFT day-view LCD 800X480 pixels
Input & Output Port	One opto-isolated input Port One RS232 Output Port
Waterproofing	Display unit: IPX5 Antenna unit: IP66
Temperature range	Display unit: -5 °C to +55 °C

## GPS RECEIVER CHARACTERISTICS

Receiver	50 parallel channel GPS receiver continuously tracks and uses up to 50 satellites to compute and update your position
Acquisition time	Cold start: 60 seconds average
Hot start	45 second average
Update rate	1/second or 10/second (selectable), continuous
Position	2.5 meters(95%) without S/A
Velocity	0.1 meter/sec without S/A
Time	100ns synchronized to GPS time
Dynamics	Altitude: 50,000m Max
Velocity	500 m/s
Acceleration	4g Max
Datum	WGS 84 and user define

## EQUIPMENT LIST

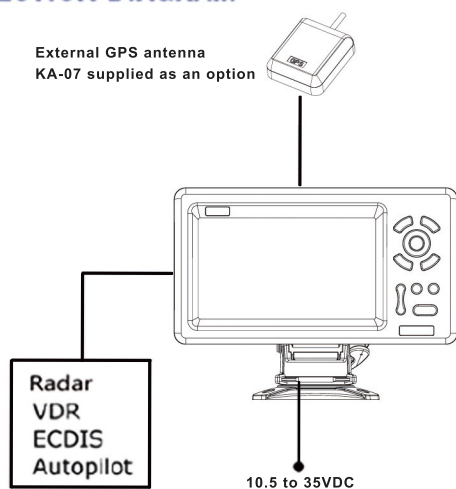
### STANDARD

1. Display unit
2. External GPS antenna with 4m cable (SMA connector)
3. Operator manual
4. Installation materials and standard spare parts

### AIS

Data input: NMEA0183,RS232  
Baud rate: 38,400

## INTERCONNECTION DIAGRAM



## DISPLAY UNIT

